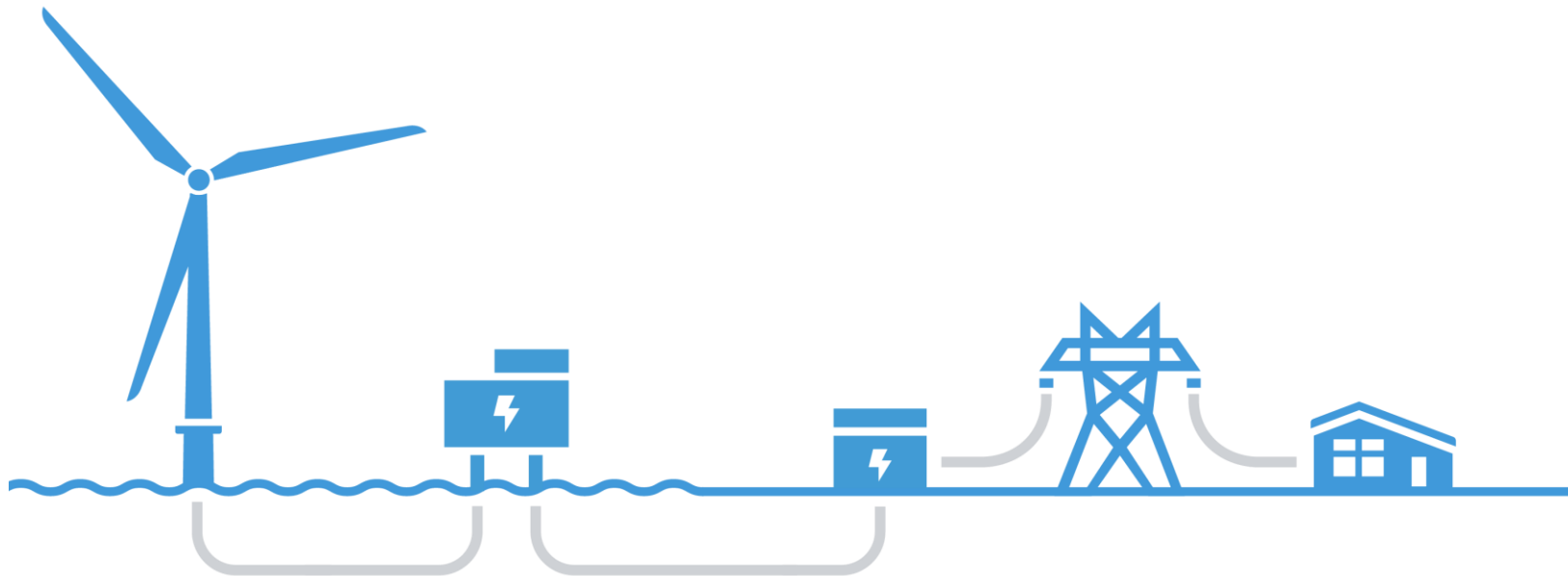


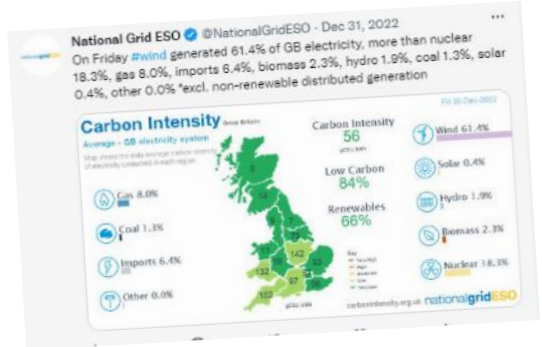
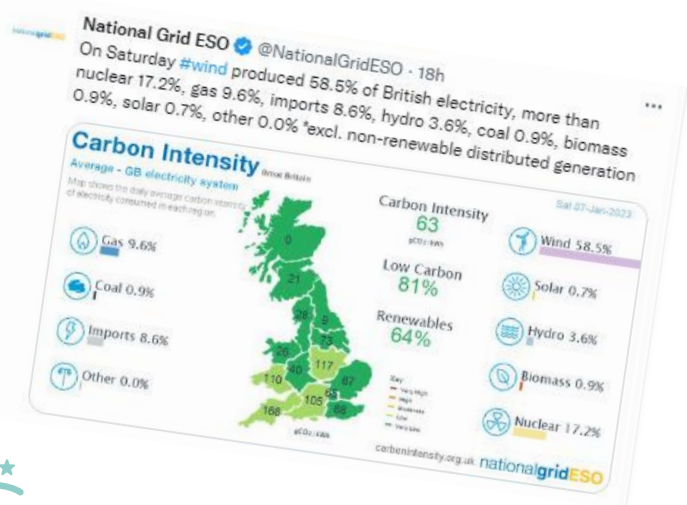
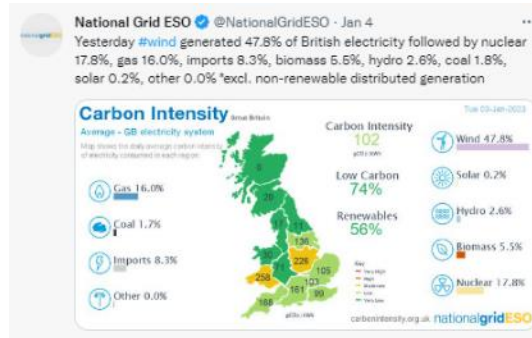
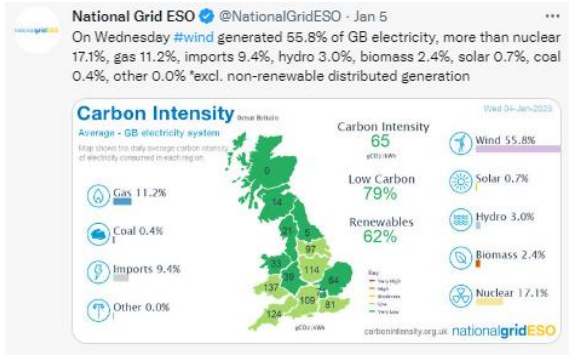
# Ørsted

A chance to change the future

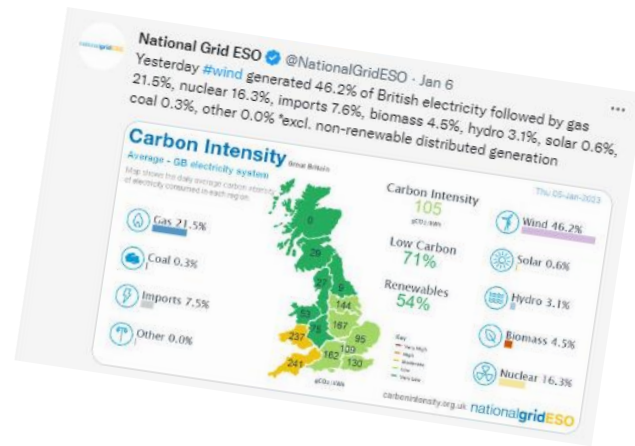
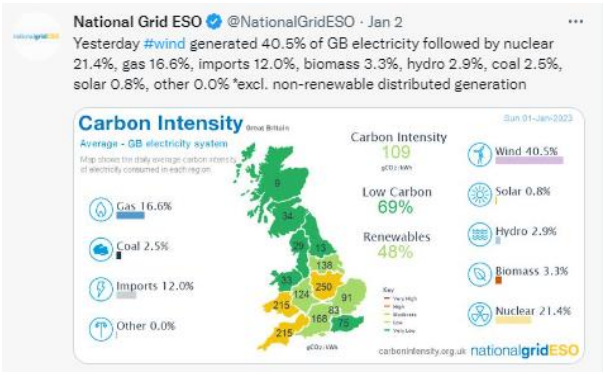
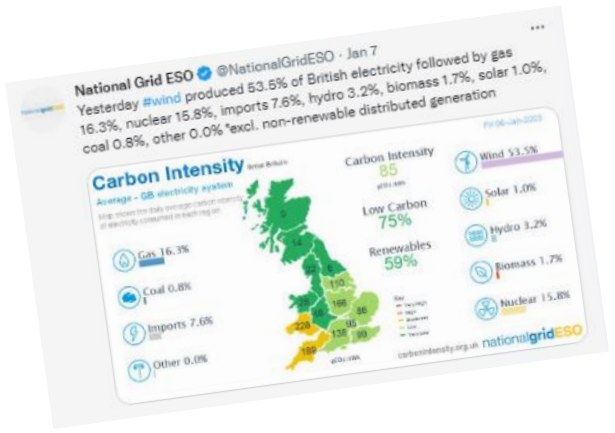


## What is offshore wind?

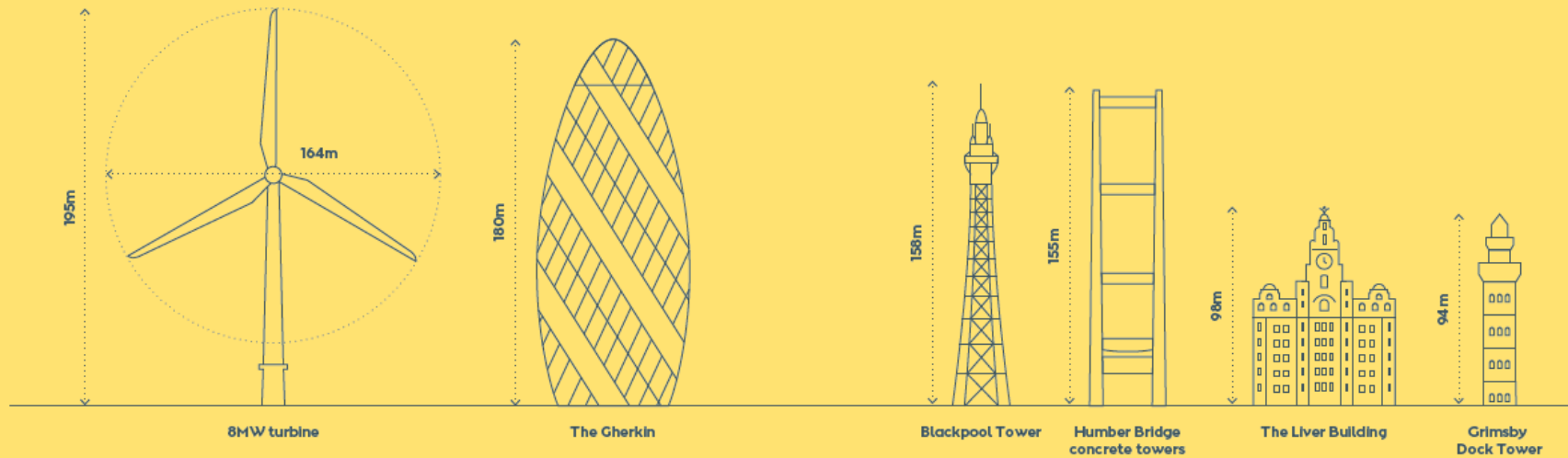




# Breaking records

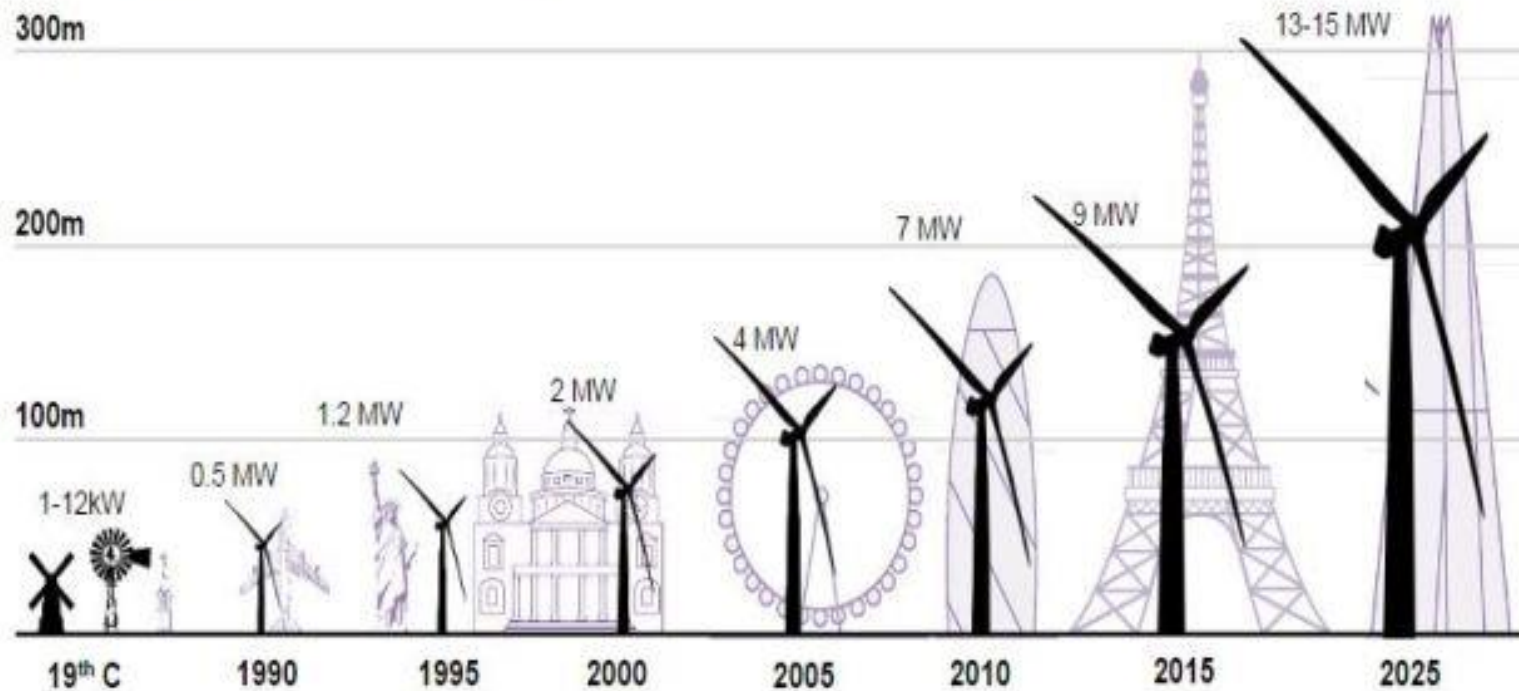


# How large is an offshore wind turbine?





# Evolution of wind turbine heights and output



Sources: Various; Bloomberg New Energy Finance

This map shows the geographical location, project name, developer and capacity of the UK's offshore wind farm developments.

The chart overlaid shows the current expected delivery timeline for every offshore wind project in development in the UK.



45 offshore wind farms in operation

45 in construction and planning

100,000 people needed to deliver

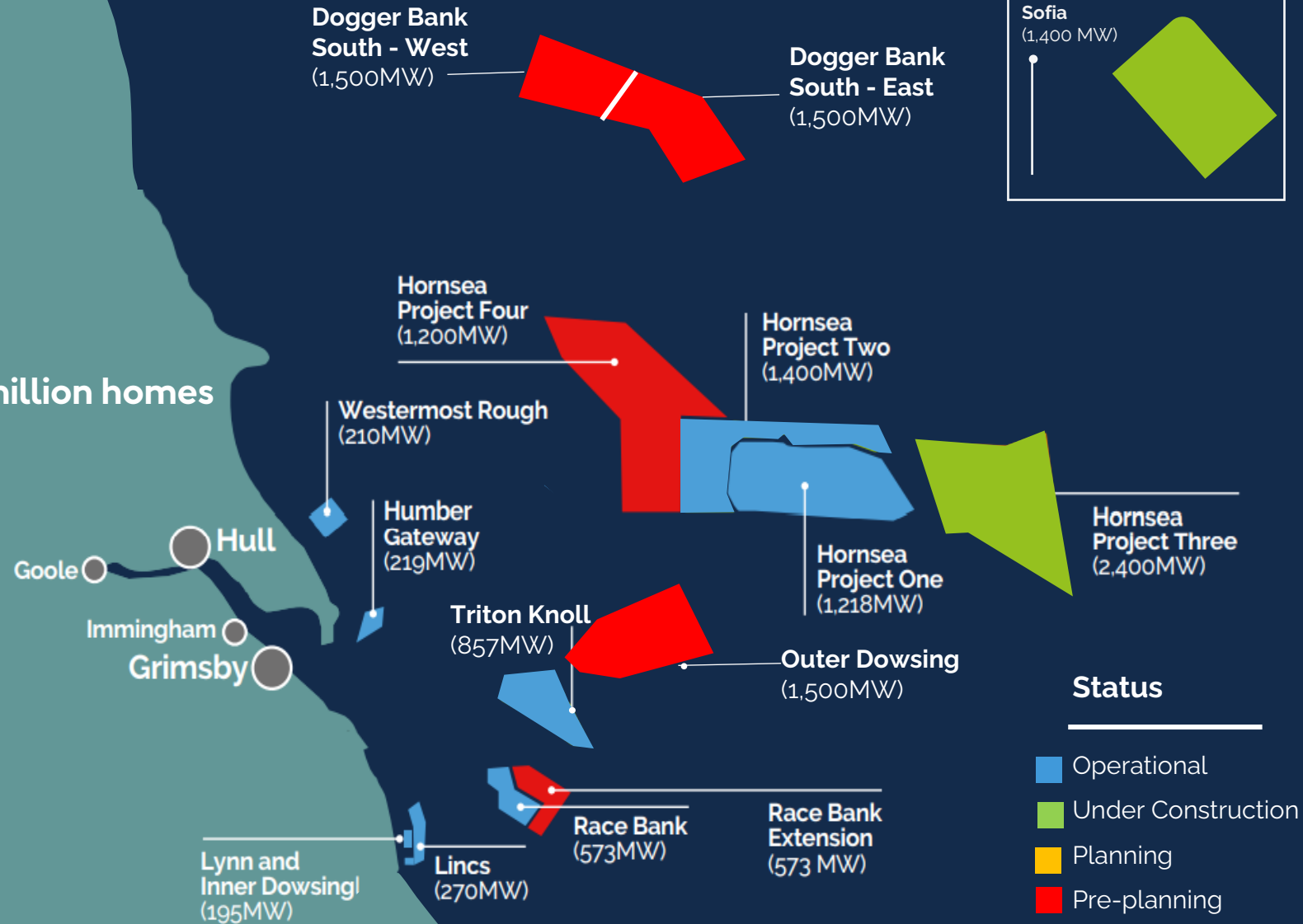
8 in operation

2 in construction

5 in development

757 turbines

Power for over 4.4 million homes



## Supply chain



Plus an army of companies that support the development, construction and operations of offshore wind farms beyond the Humber ...

- Archaeologists
- Cable layers
- Drainage consultants
- Environmental specialists
- Communications and PR agencies
- Crane providers
- Inspection services
- Helicopters
- Facilities management
- Legal support services
- Maritime specialists
- Offshore environmental survey specialist
- Engineering consultancy
- PPE providers
- Catering providers
- Landscaping
- Blade repair specialists
- Fuel suppliers



The Orsted logo features a white power symbol (a circle with a vertical line and a horizontal line) to the left of the word "Orsted" in a bold, white, sans-serif font. The background is a vibrant blue sky with a view of the Earth from space, showing the Americas and parts of Europe and Africa.

# Orsted

## Let's create a world that runs entirely on green energy

**Global green energy company  
and the leader in offshore wind**

The world's most  
sustainable energy  
company 2022

Global leader in climate  
action\*

\*On the CDP climate change  
A list

# Ørsted in Grimsby



Ørsted





**Grimsby Telegraph**

visit our website [www.thisgrimsby.co.uk](http://www.thisgrimsby.co.uk) At the heart of all things local since 1897 Tuesday, February 26, 2013 45p

**NOW IN STOCK**  
JUNE WOODS  
8-10 ABBEYGATE, GRIMSBY  
01472 347638  
[www.junewoodsgold.co.uk](http://www.junewoodsgold.co.uk)

**SEND YOUR MESSAGES TO THE DUCHESS:** page 2

**BENEFIT CHEAT'S £34K FIDDLE:** page 3

**TRIBUTES TO SECOND WORLD WAR VETERAN:** page 8

Wind firm hopes to establish haven for working vessels

# COMPANY HARBOURS A GRAND PLAN FOR ROYAL DOCK

**PLANS** for a new harbour to serve one of the biggest players in the offshore wind industry have been revealed – and it is located within Grimsby's Royal Dock.

Associated British Ports is behind the multi-million pound development, which is set to support Dong Energy's Westernmost Rough windfarm, in both construction and ongoing operations and maintenance.

The scheme, in the shadow of the Dock Tower, builds on the huge strides already made by the town in the burgeoning sector.

As exclusively revealed by the Telegraph, Dong wants to come to Grimsby, the first part of call for most of the southern North Sea developments.

The documents published as part of the early stages of the planning process for what is being referred to as Royal Dock Harbour, Part Of Grimsby, reveal the **scope of the ambition for the new port**.

The desire is to create 20 to 40 jobs through contracts that have not yet been signed.

The Danish state-owned company

... has approached ABP for help in establishing a safe haven for vessels working on the £200 million scheme off the East Yorkshire coast.

The result is the proposed creation of a small tidal basin in the north east corner of the dock, offering lock-free access to the Humber and beyond.

John Fitzgerald, port director for Grimsby and Immingham, said: "This is just the start of the application process. Potential designs are being finalised for what is a very exciting project and another major investment in the Port Of Grimsby."

"The procedures are underway, and we are all optimistic. Once again, it puts the spotlight on Port Of Grimsby as the UK centre for offshore operations and maintenance, which includes Port Of Grimsby East as well as the commercial docks."

"We are, of course, here Grimsby, E-on and B20, and hopefully we will have one of the biggest names in offshore wind."

The works, estimated to take eight

by David Laister  
Business Editor  
[www.thisgrimsby.co.uk](http://www.thisgrimsby.co.uk)

Continued on page 4

**YOUNG STARS**

8 pages showcasing youngster's sporting talents

**INSIDE**




**WANTED**  
Gold, Silver & Diamonds  
Any condition

Highest prices paid • Instant cash given  
Excellent prices paid for part exchange  
Open Sundays

**Segal's Jewellers**  
Est 1919  
Freshney Place, Grimsby

LOOKING FOR A SPECIAL MOTHER'S DAY GIFT?

**NEW Lovelinks**  
BY GARLAND  
NOW IN STOCK.




2012/13 Pre Ørsted Timber yard



2014 Site set up portacabins - Workforce of ~20 and 1 offshore wind farm









OFFICIAL



**3.3 million**  
UK homes powered



**3.8GW**  
Green power



**590**  
Offshore wind turbines



**600+**  
Workforce based out of  
the East Coast Hub

OFFICIAL



# Ørsted projects – Humber



	Operational	In construction	Development
Name	Installed Capacity (MW)	No. of Turbines	Approx. No. of Homes
Westernmost Rough	210	35	150,000
Lincs	270	75	240,000
Race Bank	573	91	400,000
Gunfleet Sands	170	50	150,000
Hornsea 1	1218	174	↑1 million
Hornsea 2	1386	165	↑ 1.3 million
Hornsea 3	2850	Up to 231	↑ 3 million
Hornsea 4	?	Up to 180	↑ 1.3 million





Whitby

Scarborough

Bridlington

Beverley

Hull

Scunthorpe

**Grimsby**

Boston

Skegness

Lincs

Cromer

**Hornsea Project Four**

**Hornsea Project Two**

**Hornsea Project One**

**Hornsea Project Three**

Westernmost  
Rough

Race Bank





# How long does it take to build a turbine?

## Less than 24 hours!





**Recruiting  
differently**

**Attitude  
Behaviours  
Teamwork  
Enthusiasm  
Positivity  
Passion**



Leadership

Practical / hands on

Offshore

Entry level

Safety

Engineering

What job can I do?

Logistics

Shifts

Onshore

Business functions

Specialist

Nature and Environment

# Apprenticeship programme

## Year 1

Based at Grimsby Institute or Furness College full time (40% Classroom / 60% Practical)

Barrow - Maintenance and Operations Engineering Technician (MOET) including Level 3 Diploma in Advanced Manufacturing Engineering

Grimsby - MOET including BTEC Level 3 Extended Diploma in Electrical Engineering

Subjects covered: Engineering principles, technical drawing, lubrication, renewables, maths, workshop, electrical principles and more



£15,700

## Year 2

Shifts (1 week on, 1 week off) at our East Coast Hub facilities where we construct, operate and maintain our wind farm sites.



£22,000

+ Offshore Allowance

## Year 3 / 4

Perform work inside an offshore wind turbine and on our onshore and offshore substations

Tasks will include troubleshooting and repairing electrical and mechanical components

Grimsby Institute assessor visits

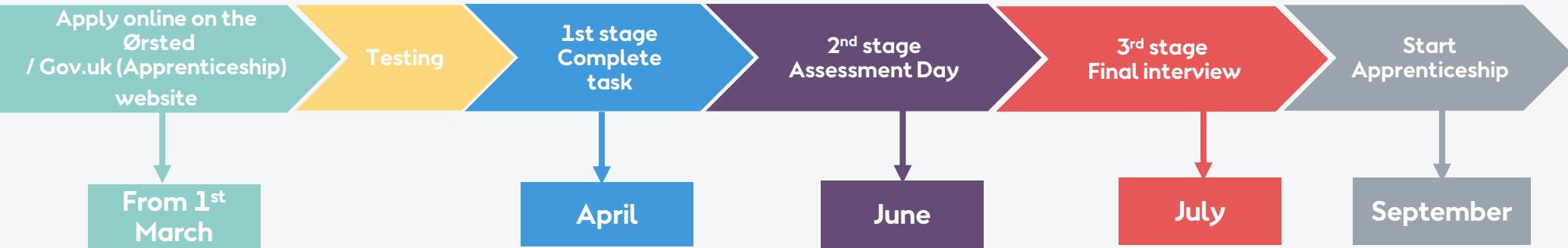


£24,000

+ Offshore Allowance

**Average Salary for a qualified Wind Farm Technician - £38,000 - £45,000**

# Application Process



## FAQs

### Where can I get more information?

We update our website with the latest information [orsted.co.uk/en/Careers/Graduates-and-Apprenticeships/Apprenticeships](https://orsted.co.uk/en/Careers/Graduates-and-Apprenticeships/Apprenticeships)

### What happens in the 'Testing' phase?

A standard Numeracy and Literacy test

### How many applications do you receive?

Our Apprenticeship programme is very popular and we receive over 500 applications per year.

### How many Apprentices do you take on each year?

Each year varies for a number of reasons. The minimum we have taken on is 4 (in our first year, 2017) but last year we took on 11.



# Routes

## Apprenticeships

- RWE
- Orsted
- Siemens Gamesa
- Rix Renewables
- Boston Energy
- HETA
- CATCH

## Cadetships

- Engineering
- Navigation
- Deck

## Degree courses

- University of Hull



OFFICIAL

# Q&A

OFFICIAL